

# FOR LEASE

5,082 SF AVAILABLE  
4120 Commercial Center Dr Suite 500  
Southeast Industrial Submarket



S INDUSTRIAL DRIVE

5,082 SF  
AVAILABLE

COMMERCIAL CENTER DRIVE





# FOR LEASE

**5,082 SF AVAILABLE**  
**4120 Commercial Center Dr Suite 500**  
**Southeast Industrial Submarket**



## SPACE FOR LEASE - INFORMATION

- **5,082 SF AVAILABLE – SUITE 500**
- **COMPRISED PRIMARILY OF PRIVATE OFFICES**
- **1 DOCK WELL**
- **~2,800 SF OF FENCED OUTDOOR STORAGE**
- **3-53 : 1000 PARKING**
- **63' TRUCK COURT DEPTH**
- **YEAR BUILT: 1984**
- **SOUTHEAST INDUSTRIAL SUBMARKET**
- **AMPLE EMPLOYEE PARKING**
- **REAR LOAD BUILDING**
- **0.4 MILES EAST OF INTERSTATE 35**

## MARKETED BY:

**LEIGH ELLIS**

512-684-3802 (D)

512-632-7167 (M)

[ELLIS@AQUILACOMMERCIAL.COM](mailto:ELLIS@AQUILACOMMERCIAL.COM)

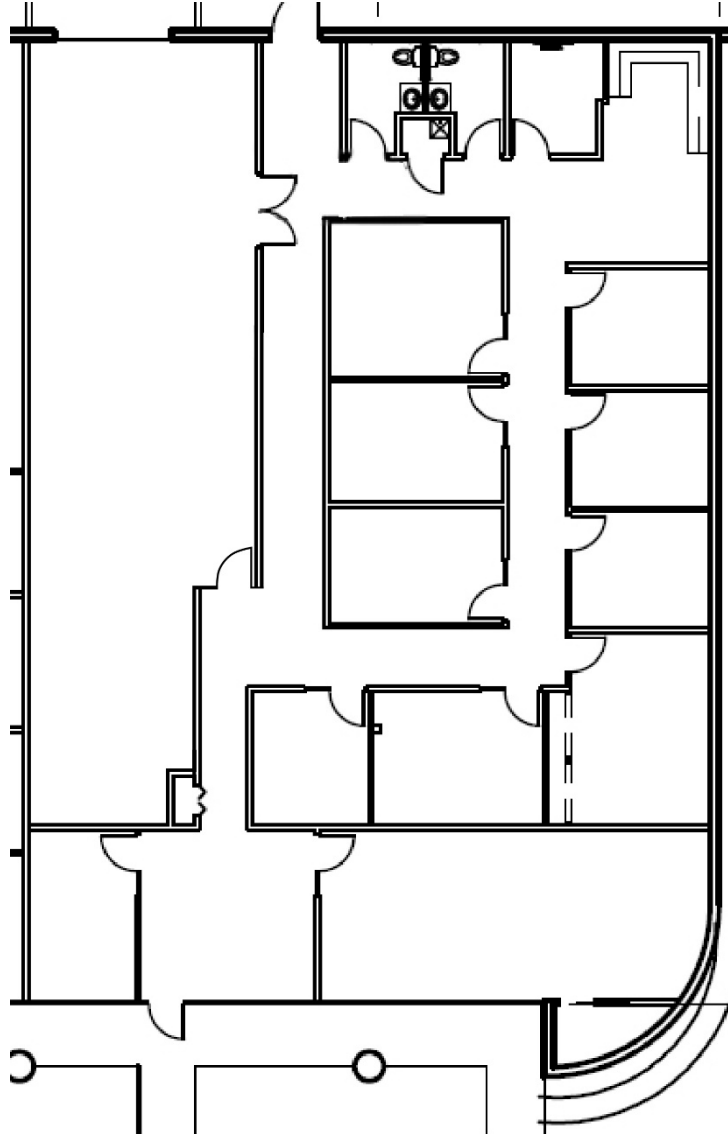


# FOR LEASE

**5,082 SF AVAILABLE**  
**4120 Commercial Center Dr Suite 500**  
**Southeast Industrial Submarket**



- **SUITE 500 - 5,082 SF**
- **COMPRISED PRIMARILY OF PRIVATE OFFICES**
- **1 DOCK WELL**
- **BATHROOMS IN SUITE**
- **AMPLE EMPLOYEE PARKING**
- **0.4 MILES EAST OF INTERSTATE 35**
- **ROUGHLY 2,800 SF OF FENCED OUTDOOR STORAGE**



# FOR LEASE

5,082 SF AVAILABLE  
4120 Commercial Center Dr Suite 500  
Southeast Industrial Submarket





# FOR LEASE

5,082 SF AVAILABLE  
4120 Commercial Center Dr Suite 500  
Southeast Industrial Submarket





# FOR LEASE

5,082 SF AVAILABLE  
4120 Commercial Center Dr Suite 500  
Southeast Industrial Submarket



COMMERCIAL CENTER DRIVE

63' DEPTH  
TRUCK COURT





# FOR LEASE

5,082 SF AVAILABLE  
4120 Commercial Center Dr Suite 500  
Southeast Industrial Submarket





# FOR LEASE

5,082 SF AVAILABLE  
4120 Commercial Center Dr Suite 500  
Southeast Industrial Submarket

