

# FOR LEASE

3,200 SF AVAILABLE  
9701 DESSAU ROAD SUITE 100  
NORTHEAST INDUSTRIAL SUBMARKET



# FOR LEASE

3,200 SF AVAILABLE  
9701 DESSAU ROAD SUITE 100  
NORTHEAST INDUSTRIAL SUBMARKET



DOWNTOWN



DESSAU ROAD

3,200 SF AVAILABLE



# FOR LEASE

**3,200 SF AVAILABLE**  
**970 1 DESSAU ROAD SUITE 100**  
**NORTHEAST INDUSTRIAL SUBMARKET**



## SPACE FOR LEASE - INFORMATION

- **3,200 SF AVAILABLE**
  - **75% OFFICE**
- **16' CLEAR HEIGHT**
- **100' BUILDING DEPTH**
- **1 DOCK HIGH DOOR**
- **DESSAU ROAD FRONTAGE**
- **0.9 MILE EAST OF I-35**
- **3.1 PARKING SPACES PER 1,000 SF**
- **NEW TPO ROOF: 2017**

### MARKETED BY:

**LEIGH ELLIS**

512-684-3802 (D)

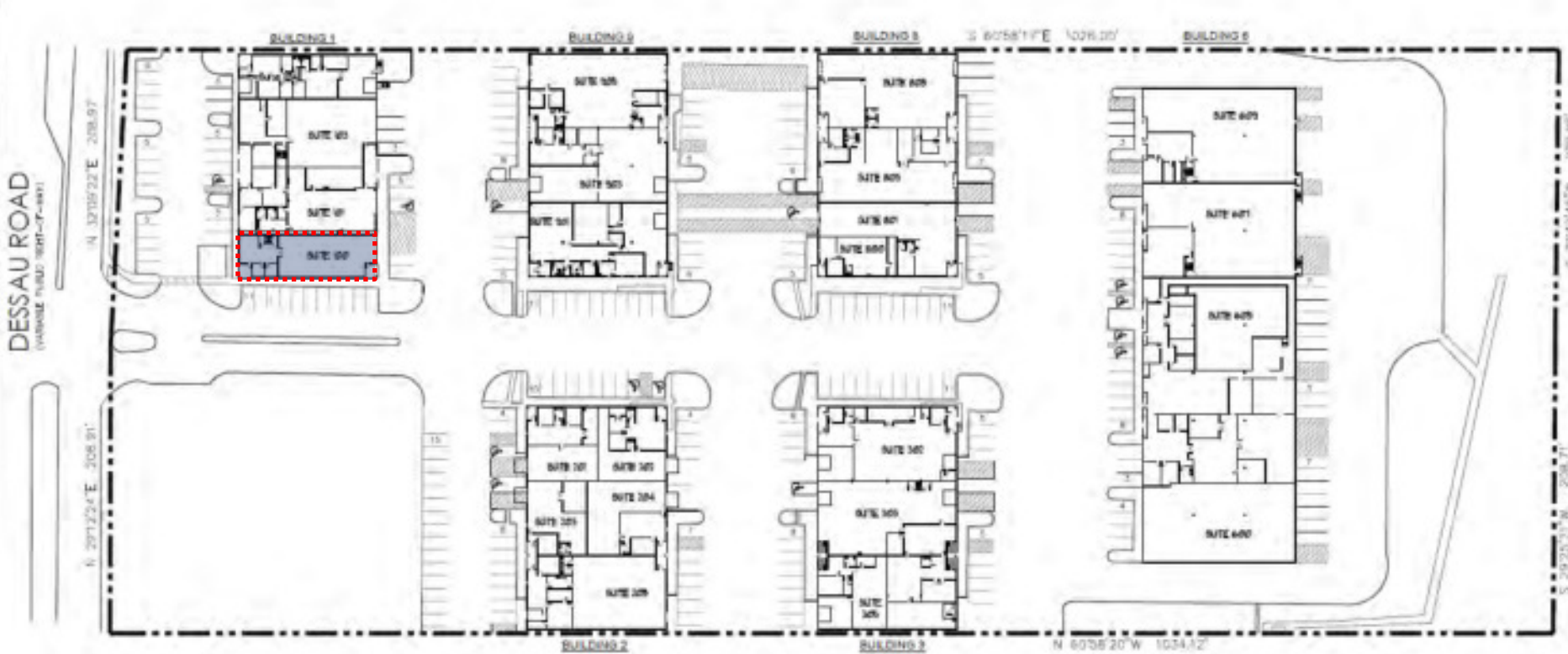
512-632-7167 (M)

ELLIS@AQUILACOMMERCIAL.COM



# FOR LEASE

3,200 SF AVAILABLE  
970 1 DESSAU ROAD SUITE 100  
NORTHEAST INDUSTRIAL SUBMARKET



The information contained herein has been given to us by the owner of the property or other sources we deem reliable, we have no reason to doubt the accuracy, but we do not guarantee it. All information should be verified prior to lease.

