

FOR LEASE

7,480 SF AVAILABLE
9701 DESSAU ROAD | AUSTIN, TEXAS
CAMERON BUSINESS PARK – BUILDING 6



FOR LEASE

7,480 SF AVAILABLE
9701 DESSAU ROAD SUITE 609 | AUSTIN, TEXAS
CAMERON BUSINESS PARK – BUILDING 6



SPACE FOR LEASE - INFORMATION

- **7,480 SF AVAILABLE (17% OFFICE)**
 - **1,247 SF OFFICE**
- **100% HVAC**
- **2 DOCK HIGH, 1 GRADE LEVEL**
- **18' CLEAR HEIGHT**
- **REAR LOADED BUILDING**
- **WET-PIPE SPRINKLER SYSTEM**
- **3.1/1,000 PARKING**
- **NEW TPO ROOF: 2017**

MARKETED BY:

LEIGH ELLIS

512-684-3802 (D)

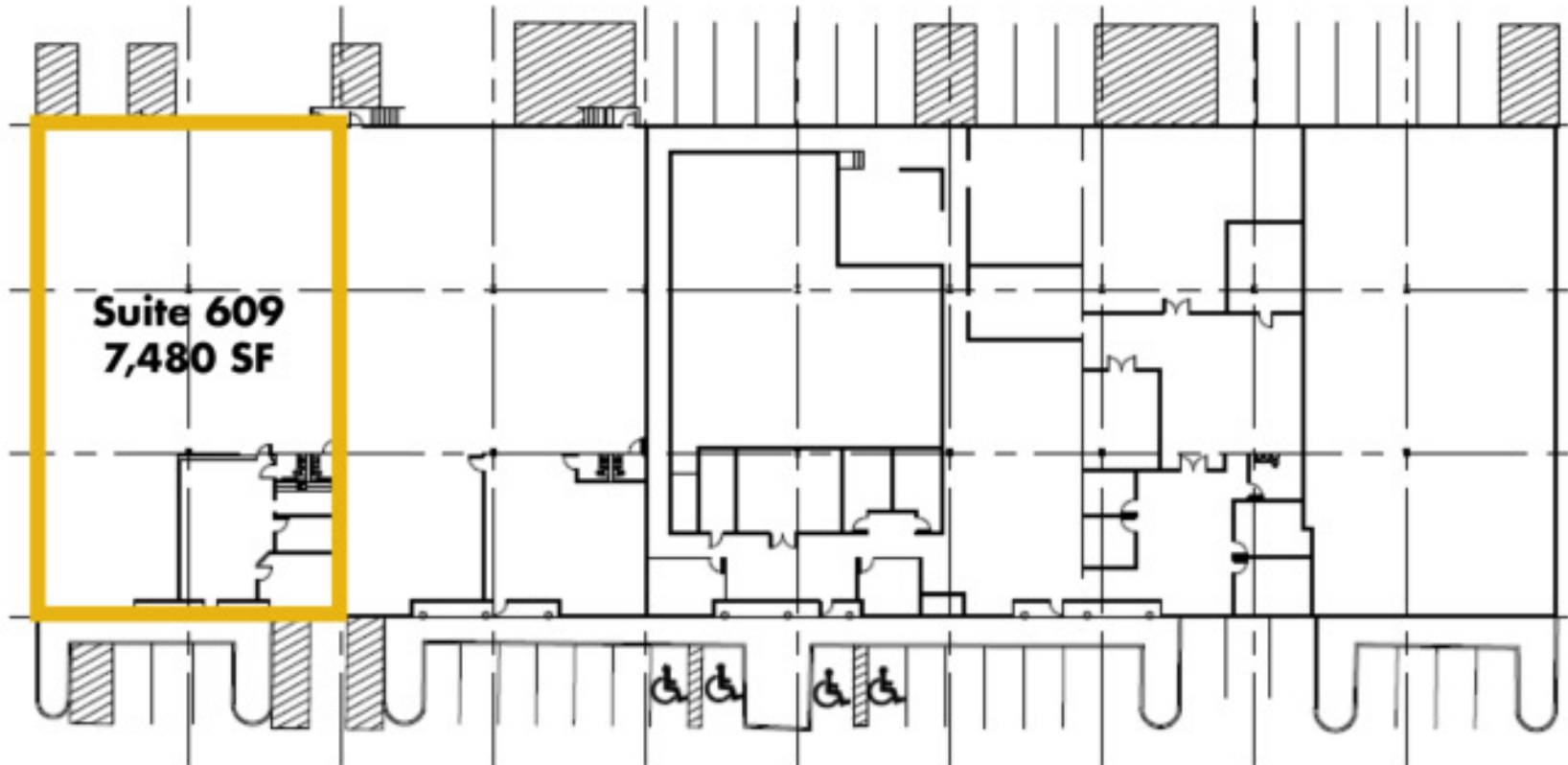
512-632-7167 (M)

ELLIS@AUILACOMMERCIAL.COM



FOR LEASE

7,480 SF AVAILABLE
9701 DESSAU ROAD | AUSTIN, TEXAS
CAMERON BUSINESS PARK – BUILDING 6



FOR LEASE

7,480 SF AVAILABLE
9701 DESSAU ROAD | AUSTIN, TEXAS
CAMERON BUSINESS PARK – BUILDING 6



FOR LEASE

7,480 SF AVAILABLE
9701 DESSAU ROAD | AUSTIN, TEXAS
CAMERON BUSINESS PARK – BUILDING 6



Dessau Road