



BUDA MIDWAY

BUDAMIDWAY.COM

CLASS A INDUSTRIAL SPACE



1795 FIRE CRACKER DRIVE • BUDA, TX 78610

Class A Industrial Space for Lease
Up to 1 Million SF



ABOUT BUDA MIDWAY



Buda Midway is a new, Class A industrial development located in Buda, Texas, just south of the SH-45 and IH-35 intersection. With two phases and six total buildings, this industrial park gives tenants expansion opportunities. If you are searching for superior warehouse, flex or distribution space on the booming IH-35 corridor, **this may be just what you are looking for.**



A thoughtfully designed Class A industrial development with intelligent design, sustainability and landscaping.

LEIGH ELLIS, SIOR

512.684.3802
ellis@aquilacommercial.com

BLAKE PATTERSON

512.684.3717
patterson@aquilacommercial.com

OMAR NASSER

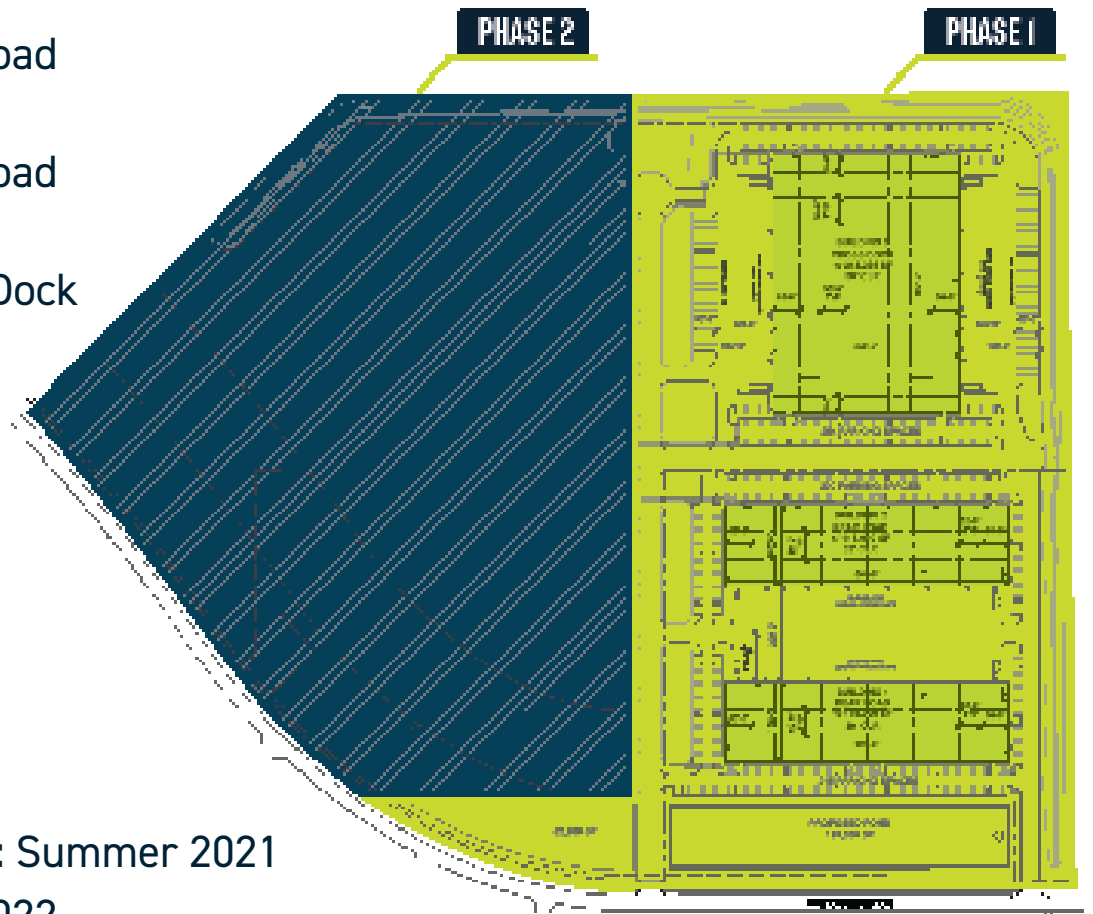
512.684.3721
nasser@aquilacommercial.com

PROPERTY SPECS



The first phase includes three buildings on **35.88 acres** totaling just over **474,000 square feet**.

- + **Building 1**
±115,090 Rear Load
- + **Building 2**
±115,090 Rear Load
- + **Building 3**
±244,285 Cross Dock



BUILDING 1 TIMELINE

- + **Groundbreaking:** Summer 2021
- + **Delivering:** Q1 2022

LEIGH ELLIS, SIOR

512.684.3802
ellis@aquilacommercial.com

BLAKE PATTERSON

512.684.3717
patterson@aquilacommercial.com

OMAR NASSER

512.684.3721
nasser@aquilacommercial.com

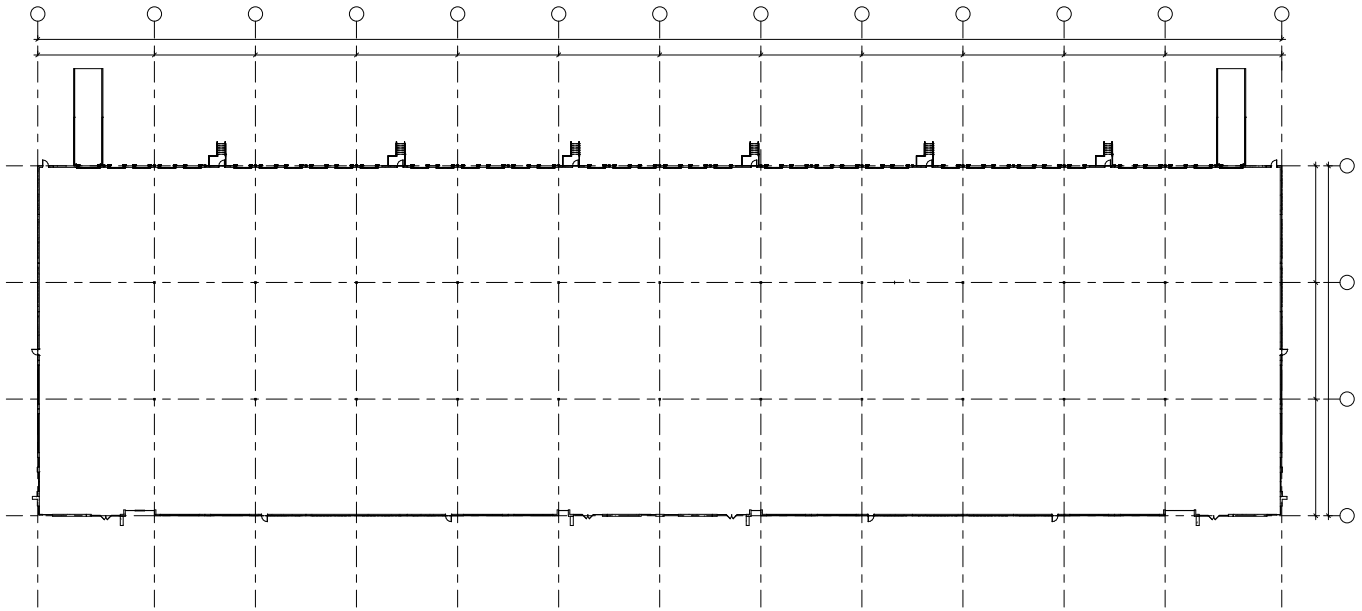


FLOORPLAN

FOR LEASE
CLASS A INDUSTRIAL SPACE



BUILDING 1



BUILDING 1 SPECS

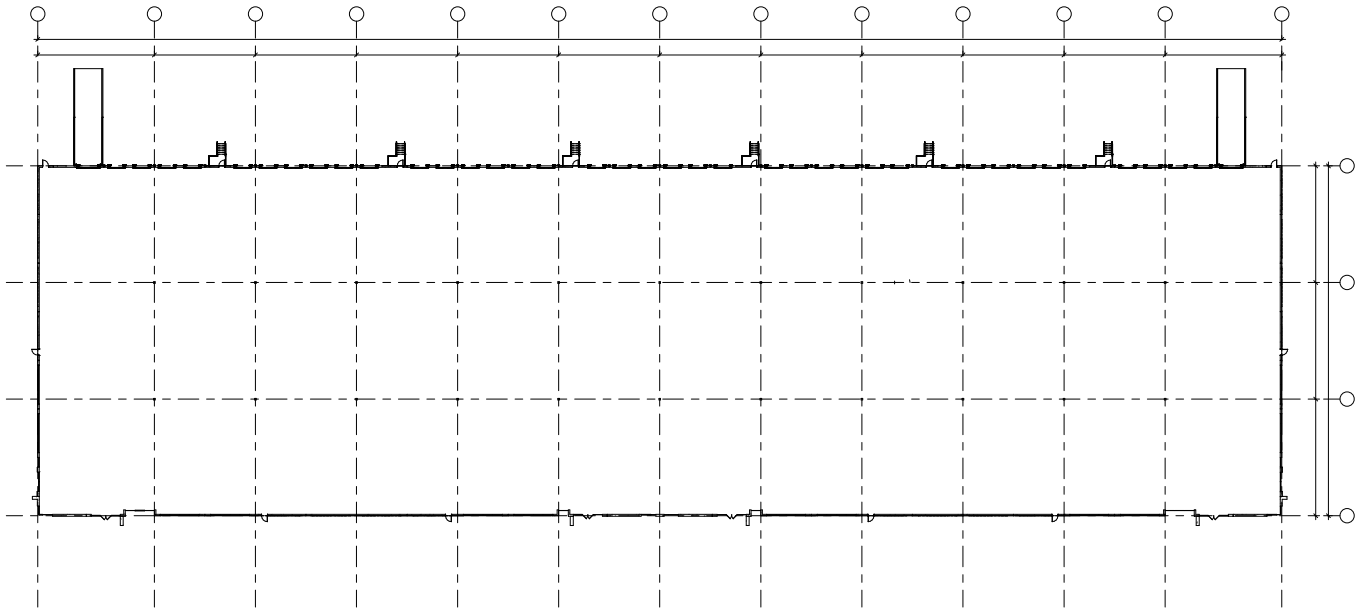
Total Size	±115,090 SF
Available Space	±115,090 SF
Building Type	Rear Load
Building Size	180' x 640'
Column Spacing	52' x 60' typical
Clear Height	30'
Dock Doors	40
Truck Court	220'
Parking	250 spaces

FLOORPLAN

FOR LEASE
CLASS A INDUSTRIAL SPACE



BUILDING 2



BUILDING 2 SPECS

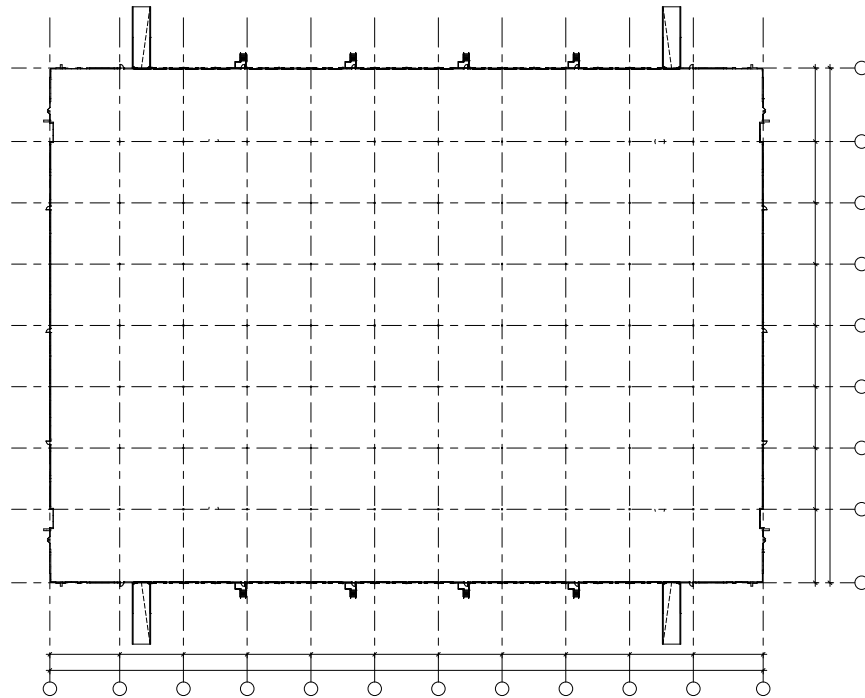
Total Size	±115,090 SF
Available Space	±115,090 SF
Building Type	Rear Load
Building Size	180' x 640'
Column Spacing	52' x 60' typical
Clear Height	32'
Dock Doors	40
Truck Court	220'
Parking	250 spaces

FLOORPLAN

FOR LEASE
CLASS A INDUSTRIAL SPACE



BUILDING 3



BUILDING 3 SPECS

Total Size	±244,285 SF
Available Space	±244,285 SF
Building Type	Cross Dock
Building Size	420' x 582'
Column Spacing	52' x 50' typical
Clear Height	36'
Dock Doors	58
Truck Court	130'
Trailer Parking	60 spaces
Parking	254 spaces

